



CARLTON HOUSE

AYCLIFFE BUSINESS PARK, COUNTY DURHAM

FROM 242 - 1000 SQ.FT.

/ Description

Carlton House is the first building in the HUB development at Aycliffe Business Park. Situated in a landscaped courtyard, the location benefits from excellent transport links into the wider region and beyond - with national rail connections from Darlington and international flights from Durham Tees Valley both less than 30 mins away by car.

As with the entire development at Aycliffe Business Park, Carlton House has a range of workspace options available from self contained offices for small businesses, to more expansive floor areas for fully established or expanding organisations.

Further benefits include free onsite parking, high specification interiors and access to our acclaimed value add service 'WORKSPACE +'^{*}

/ Key Features

- Contemporary work space with high spec interiors to keep your workforce happy
- Ultra competitive rental options to keep your accountant happy
- Air conditioning in selected offices
- Generous free parking for all tenants
- Support for latest technology platforms
- All offices eligible for access to WORKSPACE + benefits^{*}

**'WOULD YOU LIKE TO
KNOW MORE ABOUT
WORKSPACE + ?**

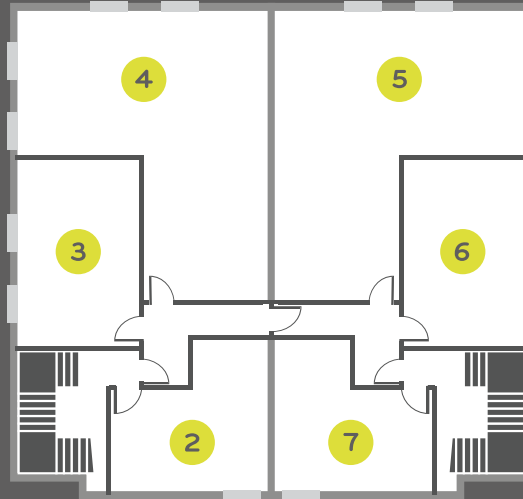
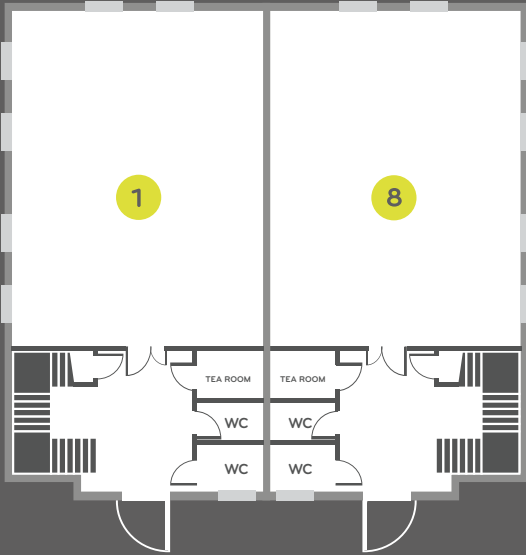
T 0845 805 7442
F 0845 508 6268
E enquiries@carltonandco.com
W carltonandco.com

Carlton & Co.
Carlton House, 15 Parsons Court,
Welbury Way, Aycliffe Business Park,
Newton Aycliffe, County Durham, DL5 6ZE

/ Ground Floor

/ First Floor

/ Floor Areas



SUITE	SQ.FT	SQ.M
Suite 1	1000	92.9
Suite 2	252	23.4
Suite 3	269	25.0
Suite 4	635	59.0
Suite 5	635	59.0
Suite 6	269	25.0
Suite 7	242	22.5
Suite 8	1000	92.9

/ Location Map



**WOULD YOU LIKE TO
KNOW MORE ABOUT
WORKSPACE+?**

T 0845 805 7442
F 0845 508 6268
E enquiries@carltonandco.com
W carltonandco.com

Carlton & Co.
Carlton House, 15 Parsons Court,
Welbury Way, Aycliffe Business Park,
Newton Aycliffe, County Durham, DL5 6ZE