



SYNKRO HOUSE

AYCLIFFE BUSINESS PARK, COUNTY DURHAM

FROM 101 - 735 SQ.FT.

/ Description

Synkro House is the second building in the HUB development at Aycliffe Business Park. Situated in a landscaped courtyard, the location benefits from excellent transport links into the wider region and beyond - with national rail connections from Darlington and international flights from Durham Tees Valley both less than 30 mins away by car.

Alongside our premium quality office units, Synkro House has the perfect tailored solution for the smaller business looking to benefit from a fully collaborative workspace, whilst keeping costs to a minimum. Our Enterprise PODS solution is designed for businesses to share space, ideas and experience, supporting continued growth and innovation.

Further benefits include free onsite parking, high specification interiors and access to our acclaimed value add service 'WORKSPACE +'*

/ Key Features

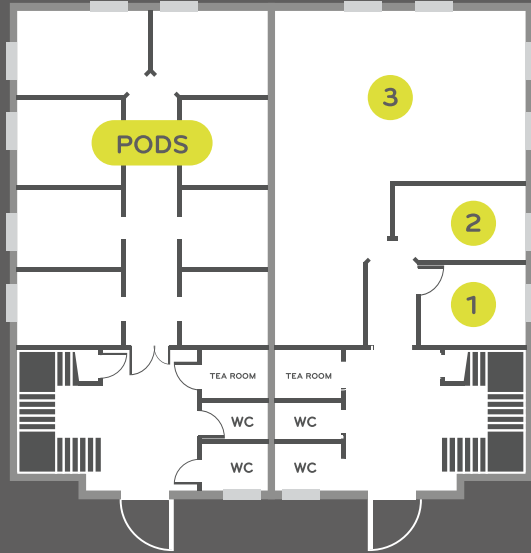
- Contemporary work space with high spec interiors to keep your workforce happy
- Ultra competitive rental options to keep your accountant happy
- Air conditioning in selected offices
- Generous free parking for all tenants
- Support for latest technology platforms
- All offices eligible for access to WORKSPACE + benefits*

**'WOULD YOU LIKE TO
KNOW MORE ABOUT
WORKSPACE + ?**

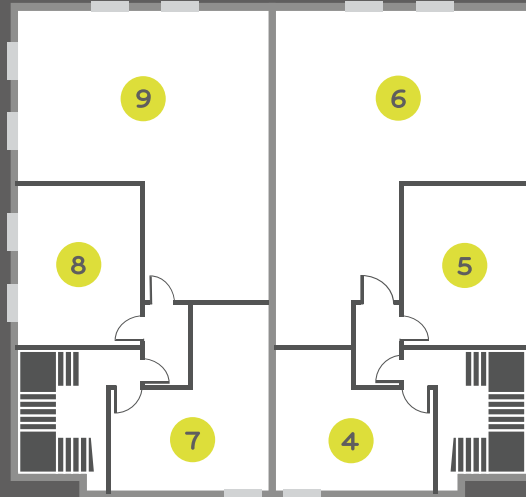
T 0845 805 7442
F 0845 508 6268
E enquiries@carltonandco.com
W carltonandco.com

Carlton & Co.
Carlton House, 15 Parsons Court,
Welbury Way, Aycliffe Business Park,
Newton Aycliffe, County Durham, DL5 6ZE

/ Ground Floor



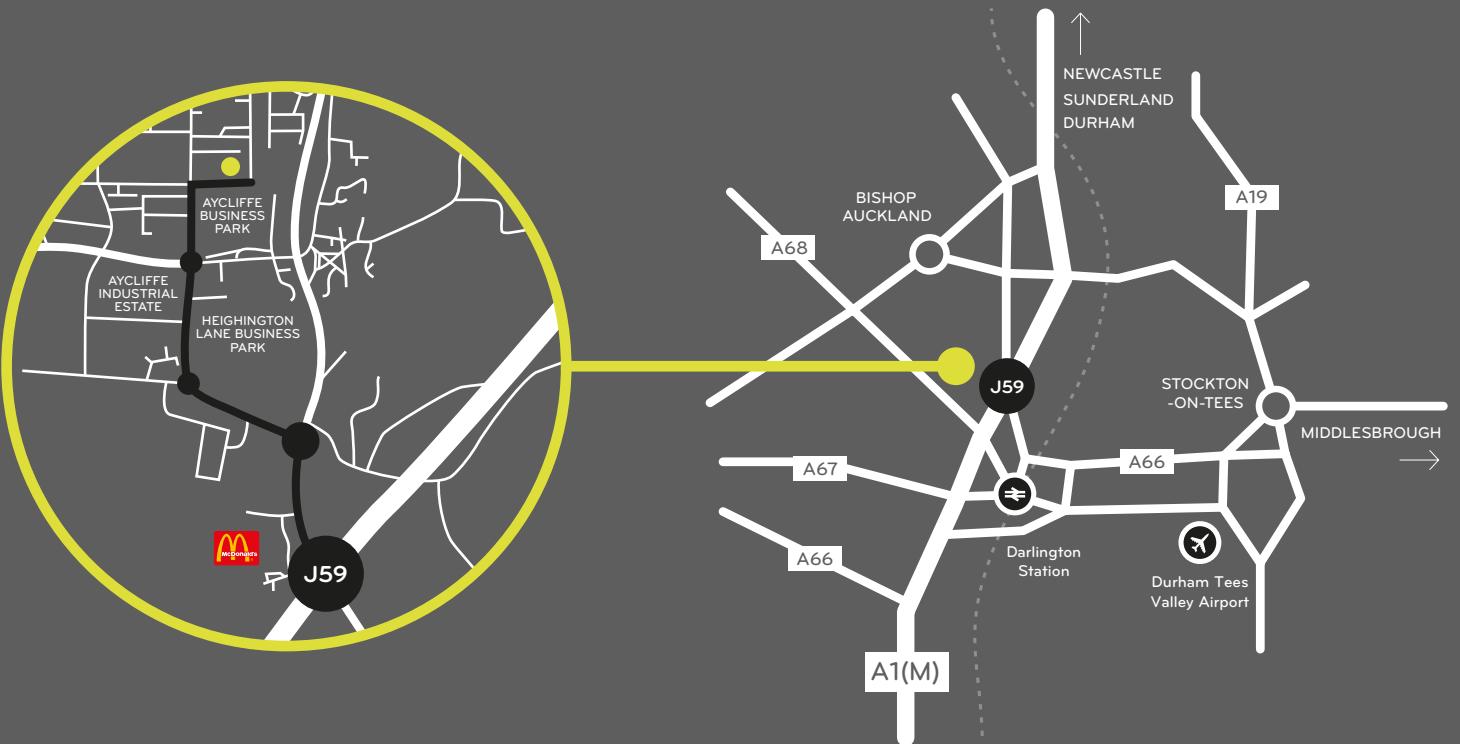
/ First Floor



/ Floor Areas

SUITE	SQ.FT	SQ.M
PODS	100 - 127	9.3 - 11.7
Suite 1	101	9.4
Suite 2	127	11.8
Suite 3	735	68.3
Suite 4	233	21.6
Suite 5	253	23.5
Suite 6	725	67.3
Suite 7	258	24.0
Suite 8	253	23.5
Suite 9	710	66.0

/ Location Map



**WOULD YOU LIKE TO
KNOW MORE ABOUT
WORKSPACE+?**

T 0845 805 7442
F 0845 508 6268
E enquiries@carltonandco.com
W carltonandco.com

Carlton & Co.
Carlton House, 15 Parsons Court,
Welbury Way, Aycliffe Business Park,
Newton Aycliffe, County Durham, DL5 6ZE